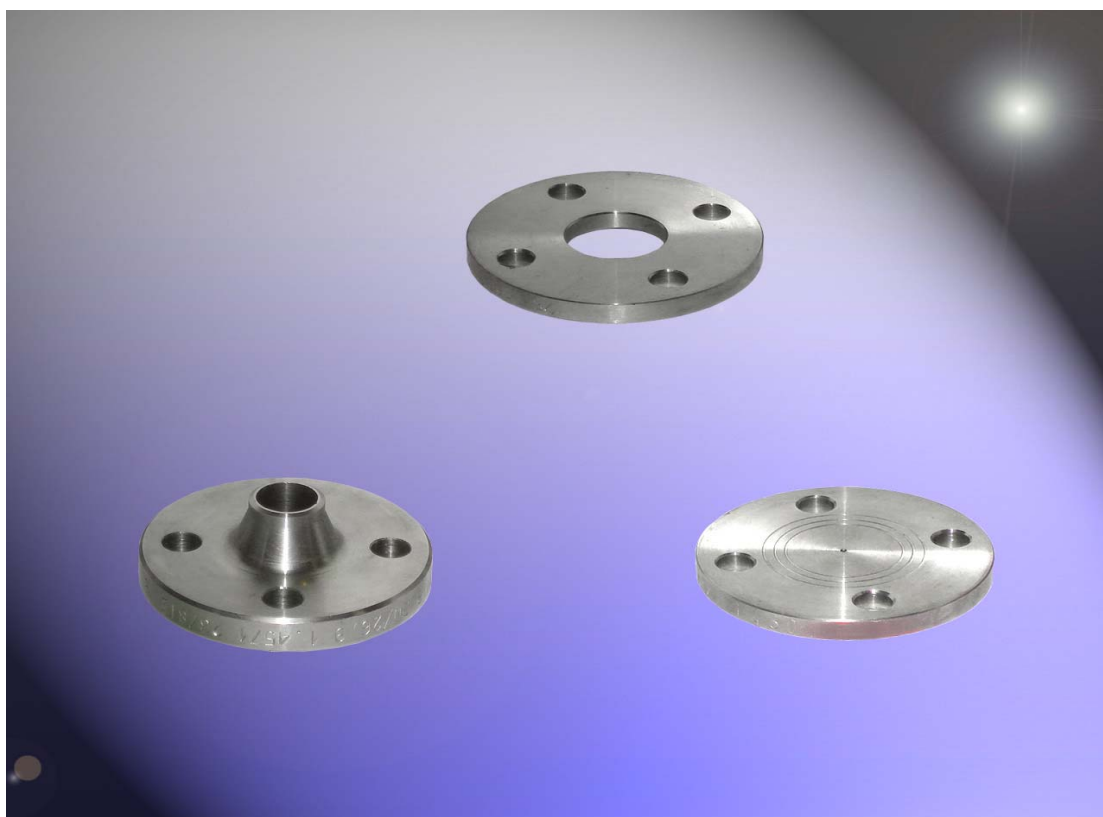




## Prirobnice



## Flansche

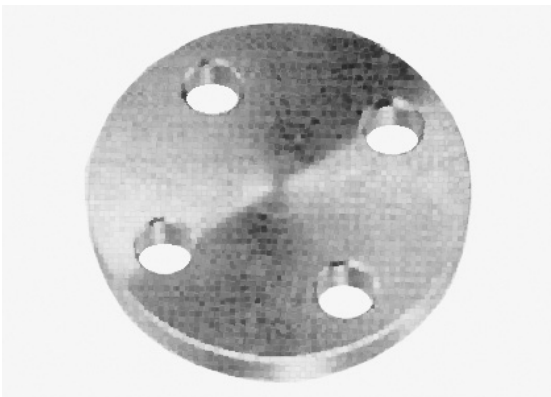
Flanges

**VARILNA GRILATA PRIROBNICA DIN2632 - 2635 PN10-40**  
**VORSCHWEIßFLANSCHEN DIN2632 – 2635 PN 10-40**  
**WELDING FLANGE DIN2632 – 2635 PN 10-40**



DN	mm	AISI 321 W.Nr.: 1.4541	AISI 316TI W.Nr.: 1.4571
15	21,3	●	●
20	26,9	●	●
25	33,7	●	●
32	42,4	●	●
40	48,3	●	●
50	60,3	●	●
65	76,1	●	●
80	88,9	●	●
100	114,3	●	●
125	139,7	●	●
150	168,3	●	●
200	219,1	●	●
250	273,0	●	●
300	323,9	●	●
400	406,4	●	●

**SLEPA PRIROBNICA DIN 2527 PN 10 - 40**  
**BLINDFLANSCHEN DIN 2527 PN 10 - 40**  
**BLIND FLANGE DIN 2527 PN 10 - 40**



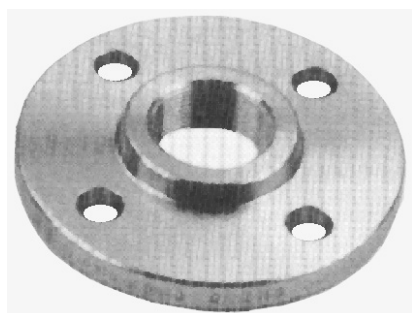
DN	mm	AISI 321 W.Nr.: 1.4541	AISI 316TI W.Nr.: 1.4571
15	21,3	●	●
20	26,9	●	●
25	33,7	●	●
32	42,4	●	●
40	48,3	●	●
50	60,3	●	●
65	76,1	●	●
80	88,9	●	●
100	114,3	●	●
125	139,7	●	●
150	168,3	●	●
200	219,1	●	●

**VARILNA RAVNA PRIROBNICA DIN 2576 PN10-40**  
**VORSCHWEIßFLANSCHKE DIN 2576 PN 10-40**  
**WELDING FLANGE DIN 2576 PN 10-40**



DN	mm	AISI 321 W.Nr.: 1.4541	AISI 316Ti W.Nr.: 1.4571
15	21,3	●	●
20	26,9	●	●
25	33,7	●	●
32	42,4	●	●
40	48,3	●	●
50	60,3	●	●
65	76,1	●	●
80	88,9	●	●
100	114,3	●	●
125	139,7	●	●
150	168,3	●	●
200	219,1	●	●
250	273,0	●	●
300	323,9	●	●
400	406,4	●	●
500	508,0	●	●

**PRIROBNICA Z NAVOJEM DIN 2566 PN 10/16**  
**GEWINDEFLANSCHKE DIN 2566 PN 10/16**  
**THREADED FLANGE DIN 2566 PN 10/16**



DN	mm	AISI 321 W.Nr.: 1.4541	AISI 316Ti W.Nr.: 1.4571
15	½"	●	●
20	¾"	●	●
25	1"	●	●
32	1 ¼"	●	●
40	1 ½"	●	●
50	2"	●	●
65	2 ½"	●	●
80	3"	●	●
100	4"	●	●

**LETEČA PRIROBNICA DIN 2642 PN10-40**  
 LOSE FLANSCHEN DIN 2642 PN 10-40  
 LAPPED FLANGE DIN 2642 PN 10-40



DN	mm	AISI 321 W.Nr.: 1.4541	AISI 316Ti W.Nr.: 1.4571
15	21,3	●	●
20	26,9	●	●
25	33,7	●	●
32	42,4	●	●
40	48,3	●	●
50	60,3	●	●
65	76,1	●	●
80	88,9	●	●
100	114,3	●	●
125	139,7	●	●
150	168,3	●	●
200	219,1	●	●
250	273,0	●	●
300	323,9	●	●
400	406,4	●	●
500	508,0	●	●